



Borough of Tamworth

Marmion House,  
Lichfield Street, Tamworth,  
Staffordshire B79 7BZ.

Enquiries: 01827 709 709  
Facsimile: 01827 709 271

## HEALTH AND WELLBEING SCRUTINY COMMITTEE

15 September 2021

Dear Councillor

A Meeting of the Health and Wellbeing Scrutiny Committee will be held in **Council Chamber, Marmion House, Lichfield Street, Tamworth, B79 7BZ on Thursday, 23rd September, 2021 at 6.00 pm.** Members of the Committee are requested to attend.

Yours faithfully

A handwritten signature in black ink, appearing to be 'A. B.', followed by a long horizontal line extending to the right.

**Chief Executive**

### A G E N D A

#### NON CONFIDENTIAL

- 1 **Apologies for Absence**
- 2 **Minutes of the Previous Meeting (Pages 5 - 12)**
- 3 **Declarations of Interest**

*To receive any declarations of Members' interests (personal and/or personal and prejudicial) in any matters which are to be considered at this meeting.*

*When Members are declaring a personal interest or personal and prejudicial interest in respect of which they have dispensation, they should specify the nature of such interest. Members should leave the room if they have a personal and prejudicial interest in respect of which they do not have a dispensation.*

**4 Update from the Chair**

**5 Midlands Partnership Foundation Trust presentation (Pages 13 - 38)**

*(To receive an update from representatives of the Midlands Partnership Foundation Trust)*

**6 Responses to Reports of the Health & Wellbeing Scrutiny Committee**

*(Update on responses to the Reports of the Health & Wellbeing Scrutiny Committee)*

**7 Consideration of matters referred to the Health & Wellbeing Scrutiny Committee from Cabinet or Council**

*(Discussion item)*

**8 Update on health related matters considered by Staffordshire County Council (Pages 39 - 42)**

*(To receive the Digest from Staffordshire County Council's Health and Care Overview and Scrutiny Committee and an update from County Councillor T Jay)*

**9 Forward Plan**

*Please see the link to the Forward Plan:*

<http://democracy.tamworth.gov.uk/mqListPlans.aspx?RPId=120&RD=0&bcr=1>

**10 Health & Wellbeing Scrutiny Work Plan - 2021/22 (Pages 43 - 46)**

*To consider items for 2021/22 Health & Wellbeing Scrutiny Committee Work Plan*

---

**Access arrangements**

*If you have any particular access requirements when attending the meeting, please contact Democratic Services on 01827 709267 or e-mail [democratic-services@tamworth.gov.uk](mailto:democratic-services@tamworth.gov.uk). We can then endeavour to ensure that any particular requirements you may have are catered for.*

### **Filming of Meetings**

*The public part of this meeting may be filmed and broadcast. Please refer to the Council's Protocol on Filming, Videoing, Photography and Audio Recording at Council meetings which can be found [here](#) for further information.*

*If a member of the public is particularly concerned about being filmed, please contact a member of Democratic Services before selecting a seat.*

### **FAQs**

*For further information about the Council's Committee arrangements please see the FAQ page [here](#)*

To Councillors: R Claymore, D Maycock, P Brindley, M J Greatorex, J Harper, J Jones, S Peale, R Rogers, J Wade and County Councillor T Jay

This page is intentionally left blank



**MINUTES OF A MEETING OF THE  
HEALTH AND WELLBEING SCRUTINY  
COMMITTEE  
HELD ON 13th JULY 2021**

**PRESENT:** Councillors D Maycock (Vice-Chair in the Chair), P Brindley, J Harper, J Jones, S Peale, R Rogers and J Wade

**GUEST** Susan Unwin, Consultant Nurse and Approved Clinician, Midlands Partnership Foundation Trust

The following officers were present: Joanne Sands (Assistant Director Partnerships)

Apologies received from: Councillor(s) R Claymore, M J Greatorex and County Councillor T Jay

**11 APOLOGIES FOR ABSENCE**

Apologies for absence were received from Councillors R Claymore and M Greatorex and County Councillor T Jay. Councillor D Maycock chaired the meeting.

**12 MINUTES OF THE PREVIOUS MEETING**

The minutes of the meeting held on 22 June 2021 were approved as a correct record.

*(Moved by Councillor S Peale and seconded by Councillor J Harper)*

**13 DECLARATIONS OF INTEREST**

There were no declarations of interest.

**14 UPDATE FROM THE CHAIR**

The Chair reported that there was a Long Covid Assessment Clinic which residents of Tamworth could access if they continued to struggle with symptoms

post Covid which had not improved through self management. Please see the link to the NHS website below:

<https://www.mpft.nhs.uk/service-users-carers/coronavirus-information/coronavirus-resources>,

Access to the Long Covid Assessment Clinic service was via referral from the GP.

## **15 PARTNERSHIP WORKING TO SUPPORT MENTAL HEALTH COMMUNITY PROVISION IN TAMWORTH**

The Chair welcomed to the meeting Ms Jo Sands, Assistant Director Partnerships and Ms Susan Unwin, Consultant Nurse and Approved Clinician at the Midland Partnership Foundation Trust (MPFT). The Chair reported that Upkar Jheeta, Head of Primary Care Development & MH Programme Lead (South Staffordshire) from MPFT was unable to attend this evenings meeting. The Chair invited the Assistant Director Partnerships and the Consultant Nurse and Approved Clinician to provide a brief overview of the mental health services available in Tamworth.

The Assistant Director reported that The Tamworth Community Safety Partnership Plan 2022-23 identified vulnerable persons and contextual safeguarding (including drugs, alcohol and mental health) as a priority and aligned with the Council purpose to help tackle the causes of inequality and increase opportunities, help tackle causes and effects of poverty and financial hardship and help build resilient communities.

The Council continued to work with statutory and voluntary sector partners who were responsible for the delivery of services to support the vulnerable, especially as a result of the current pandemic.

The Assistant Director Partnerships reported that she was a member of the Southeast Integrated Care Partnership (ICP) Healthy Communities Partnership, initially formed to bring together key Voluntary, Community and Social Enterprise (VCSE) partners with key NHS and local authority organisations in the wake of the Covid-19 pandemic.

The purpose of the partnership was to work to address health inequalities by working with residents through community asset based approaches (nurturing the strengths and resources of people and communities) in Southeast Staffordshire.

Tamworth was also represented by the Partnerships team on relevant Staffordshire County Council and Staffordshire Commissioners Office for Police Fire and Crime meetings working to address wider community safety and vulnerability concerns.

The Assistant Director reported that mental health had been highlighted as a national area of concern and that it was a focus of need in Tamworth and a priority across all partners.

The Consultant Nurse and Approved Clinician provided an overview of the current configuration of mental health services in Staffordshire as well as the transformation model underway and the partnerships involved in that.

In terms of the services delivered these spanned Adult Mental Health Community services, including increased access to psychosocial therapies, memory teams, dementia and memory services, crisis resolution and Core 24 (liaison mental health teams in acute hospitals (Burton hospital)), as well as Adult In-Patient Services, which for Tamworth residents were based at St George's hospital and included Dementia in-patient wards and MOD beds as well a Social Care to support hospital discharge.

The Staffordshire and Stoke-on-Trent Community Mental Health Transformation Model aimed to proactively identify local population needs, gaps and emerging demand, using local knowledge in developing priorities and inequalities in health. There would be no wrong door to access services, with a single point of access to services, enabling self-referral and a reduced threshold to access care. There would be a drive for NHS providers to work with all voluntary services to remove boundaries. The model would involve partnerships with social care, substance misuse, housing and the voluntary sector to seek to consider patients holistically understanding that multiple factors impact on mental health and to seek to provide services to patients to support in their recovery in ways that were most effective for them. This was expected to involve building on local assets which existed and addressing gaps, as well as integrating and mutually supporting services to provide a broad rehabilitation and recovery pathway for patients. There would be specific pathway opportunities for community rehabilitation, eating disorders and personality disorders.

It was reported that the Strategy involved engagement and collaboration to hear all views, assessing health data locally to understand areas of deprivation, co-producing high quality services (being informed by service users) and delivering, with partners, high quality care. The Consultant Nurse and Approved Clinician provided an overview of how service users could access support (via GP, mental health practitioner, the integrated response hub, or via self-referral) how needs would be screened and supported, including linking with appropriate support such as housing, debt advice, social prescribing and substance misuse advice, as well as ensuring physical health checks were completed and followed up, and how specialist interventions could be provided where greater support was required.

The Committee sought and received the following clarifications:

- The extent of the additional funding which had been made available.
- Communication of the existence of this support as well as how to access it was considered to be key, and the importance of making sure the communication reached potential service users. The need to use a variety of communication methods and not rely on digital communication was highlighted. It was suggested that posters at relevant sites would assist in communicating this message, as well as any use of digital signage within the town centre if that were to be developed to enable campaigns to be highlighted. It was further highlighted that there would be value in

engaging with the voluntary sector locally who could provide meaningful communication routes to communities and the extent to which these routes had been fully explored within Tamworth.

- The role of the PCSOs in this area and their access to mental health colleagues was raised and it was reported that partnership meetings, involving the police, were held weekly which could assist. It was further reported that there would soon be a mental health worker based within the Tamworth Advice Centre to provide support.
- The training available to council staff in this area, where it was reported that all staff received Level 1 safeguarding training with additional training, including mental health first aid training, provided to staff in certain roles.
- The importance of being able to sign post to a clear first access point for either service users, or those with concerns around others with possible mental health issues, was raised. The value of mental health first aid training in the community was highlighted. The Consultant Nurse advised that the Access Team (based in Lichfield) was available 24/7. Furthermore support and literature was available from Staffordshire County Council, Staffordshire Cares, if there were safeguarding concerns for any vulnerable adults.
- Whether further details of the granular understanding of local issues could be provided and how quickly there would be plans developed to address any issues specifically identified. It was reported that one of the outcomes for Tamworth of the heat tool exercise undertaken was the decision to fund support into the Tamworth Advice Centre, around debt management issues.
- Clarification was sought on whether the Council website content could be improved to help publicise the Access Team telephone number and to link through to the relevant services on MPFT website.
- How service users were being engaged in this process, where it was reported that current service users were being engaged through service users network and carers organisations and ensuring that there was co-working and co-production of the services.
- How consideration of veterans needs was being accommodated in this process, where the Consultant Nurse and Approved Clinician reported that she would take that query back.
- How the lowering of the threshold to access services would be communication to GPs, where it was reported that GPs were engaged in the processes including with the addition of ARRS workers to local primary care networks.

The Committee thanked the Assistant Director Partnerships and the Consultant Nurse and Approved Clinician for their attendance and presentation and looked forward to welcoming them back in September.

## **16 RESPONSES TO REPORTS OF THE HEALTH & WELLBEING SCRUTINY COMMITTEE**

None to report to this meeting.



**17 CONSIDERATION OF MATTERS REFERRED TO THE HEALTH & WELLBEING SCRUTINY COMMITTEE FROM CABINET OR COUNCIL**

No matters had been referred to this Committee.

**18 UPDATE ON HEALTH RELATED MATTERS CONSIDERED BY STAFFORDSHIRE COUNTY COUNCIL**

The Chair reported that the previous meeting of Staffordshire County Council Health & Care Overview and Scrutiny Committee had taken place on 5 July 2021. At that meeting, the Councillor Claymore had sought clarification, as requested by this Committee, on the uptake of vaccination by homeless people. The response was that when the majority of homeless people had been in temporary accommodation the vaccination teams had been able to locate and offer the first vaccinations leading to good uptake, however, the update for the second vaccinations had fallen off due to difficulties in locating people.

The Digest of the relevant business considered at the meeting on 5 July 2021 was published and made available to members and the Chair reported that the main item of relevance to this Committee appeared to be the Access to GP services item, where it was recognised that this was a Staffordshire wide issue, which the Clinical Commissioning Group (CCG) was taking steps to ease.

**19 FORWARD PLAN**

The Chair highlighted two items from the Forward Plan:

1. Leisure Services; and
2. Homelessness Winter Relief 2021/22

The Committee agreed that it would like to consider the Leisure Services item prior to any final Cabinet decision, and further that Homelessness was already an area of focus for this Committee and therefore the above item should fit within its work plan.

**20 HEALTH & WELLBEING SCRUTINY WORK PLAN - 2021/22**

The Committee updated the work plan as follows:

**Health & Wellbeing Scrutiny Work Plan**

<b>Work Plan 2021 – 2022</b>		
<b>Work Area Themes for the Year</b>		
<b>1. Mental Wellbeing</b>		
<b>Topics</b>	<b>Target Meeting</b>	<b>Additional information</b>
Community mental health services transformation – pathways to care in Tamworth	23 <sup>rd</sup> September 2021	Invitation extended to Assistant Director Partnership & representative of Midland Partnership Foundation Trust
Leisure Services	date to be confirmed	
Substance abuse / addiction		
Young people’s experiences in Tamworth		To capture the working groups learnings
Loneliness / isolation		
<b>2. Homelessness</b>		
<b>Topics</b>	<b>Target Meeting</b>	<b>Additional information</b>
Overview of services available to rough sleepers / homeless people in Tamworth		Suggested invitation to representatives of Heart of Tamworth and/ or other relevant voluntary organisations
Housing Allocations Policy – post implementation review		Suggested invitation to Assistant Director, Neighbourhoods
Homelessness Winter Relief Update	19 <sup>th</sup> October 2021	Invitation to Assistant Director, Neighbourhoods

<b>Other suggested topics for Committee consideration</b>		
Green and open spaces		
Attainment and Skills in Tamworth		
<b>Specific topics to feed in to Staffordshire County Council (separate from main Themes)</b>		
<b>Topic</b>	<b>Date of planned Staffs consideration</b>	<b>Additional information</b>
Wider determinants of health in Tamworth, including diet / food vulnerability / healthy eating / social prescribing		Extend an invitation to voluntary sector to understand current initiatives eg Community Together CIC
Strategic Transformation Programme (STP)		To tie in with County consideration when dates for County consideration known
<b>Possible Working Group topics</b>		
Armed Forces Covenant		Understand the current Staffordshire wide and Tamworth position

<b>Upcoming Health &amp; Wellbeing Scrutiny Committee Meetings</b>
23 <sup>rd</sup> September 2021
19 <sup>th</sup> October 2021
20 <sup>th</sup> November 2021
25 <sup>th</sup> January 2022
29 <sup>th</sup> March 2022

---

**Upcoming Relevant County Council Meetings**

**Health and Care Overview and Scrutiny Committee – Staffordshire  
County Council**

- 9 August 2021
- 13 September 2021
- 25 October 2021
- 29 November 2021
- 31 January 2022
- 15 March 2022
- 19 April 2022

---

Chair



**Midlands Partnership**  
NHS Foundation Trust  
*A Keele University Teaching Trust*

# Mental Health Developments in Tamworth

Speakers:  
Sally Unwin - Consultant Nurse and Approved Clinician (MPFT)  
Ujjwal Jheeta - Head of Business & Service Development (MPFT)

Page 13

Agenda Item 5



# Scope

- Current Configuration of MH services
- CMHF updates
- Core24
- Winter discharge and hospital avoidance pathway
- Crisis Alternatives (Autism)
- IAPT

# Current Configuration of Adult MH Services

# Services Delivered



**Midlands Partnership**  
NHS Foundation Trust  
A Keele University Teaching Trust

## Adult Mental Health Community

Adult Community Mental Health

Increased Access to Psychosocial Therapies (IAPT)

Dudley Memory Team

Dementia & Memory Service

Core 24 (Burton Hospital)

Adult Liaison Psychiatry

Crisis Resolution & Home Treatment Service

Dementia Liaison Team

Access

Specialist MH support into Prisons & joint working with LAs

## Adult In-Patient Services

Adult Acute Mental Health In-Patient

Older Adult Mental Health In-Patients

Dementia In-Patient Wards

MOD Beds

PICU

136 Suite

## Social Care

Hospital Discharge Teams (discharge pathway)

Adult Mental Health Section 75 Agreement (Staffordshire)

Community Managed Libraries



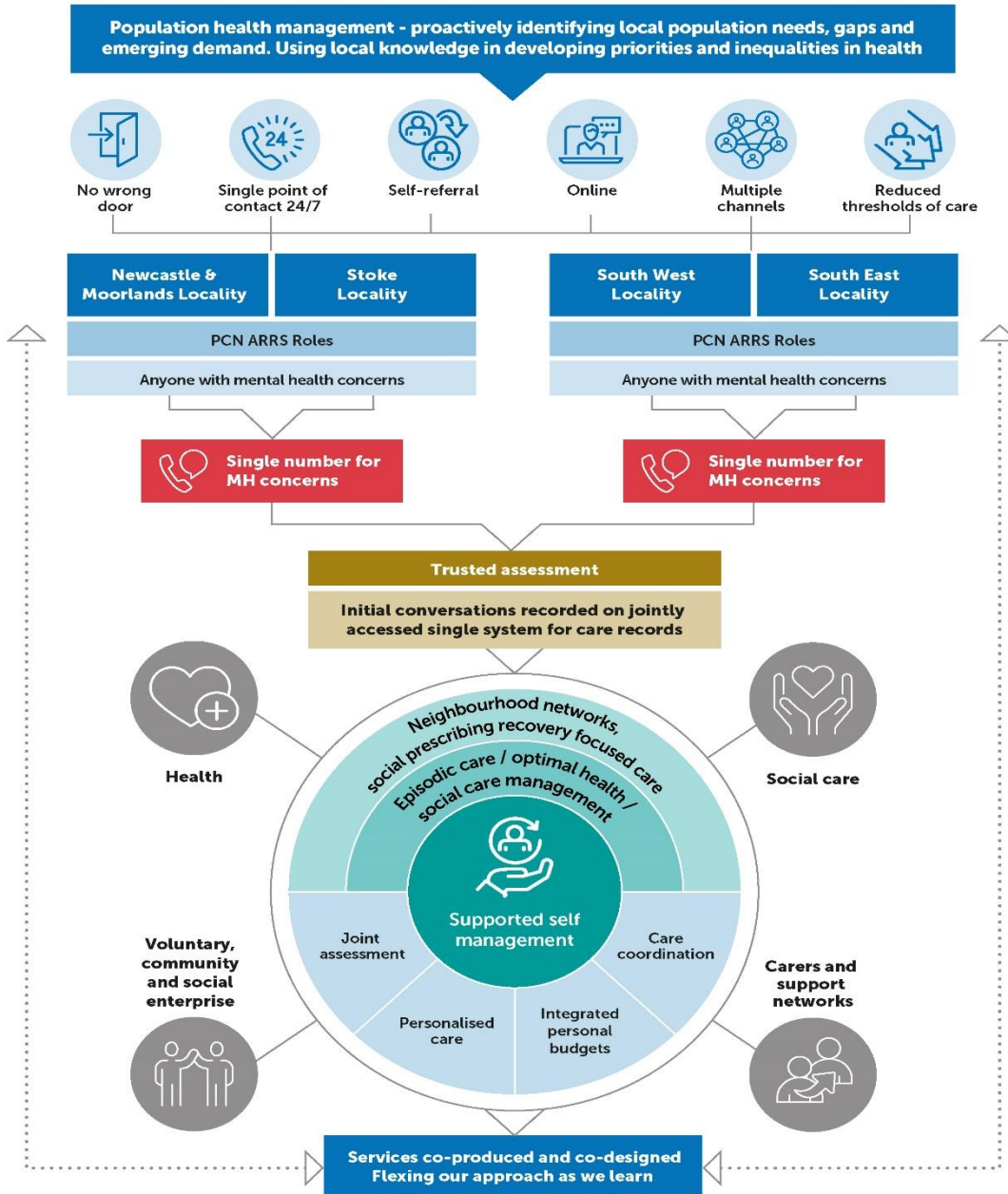


## SMI data: Quarter 4 figures

CCG	% Full check	Actual numbers	Total SMI register
Cannock CCG	16.3%	143	879
East Staffs	9.7%	69	715
S/East staffs and Seisdon	21.4%	299	1400
Stafford and surrounds	25.9%	250	964
<b>Total</b>		<b>761</b>	<b>3958</b>

# Community Mental Health Framework

# Staffordshire & Stoke on Trent Community Mental Health Transformation Model



# Partnerships with Social Care, Substance Misuse, Housing & Voluntary Sector

- Opportunity to consider patients as people: holistic lives, multiple factors that impact on mental health
- Multiple opportunities to prevent a return to severe mental illness and to recover in ways that are most effective for them
- Shaping these services as they are developed

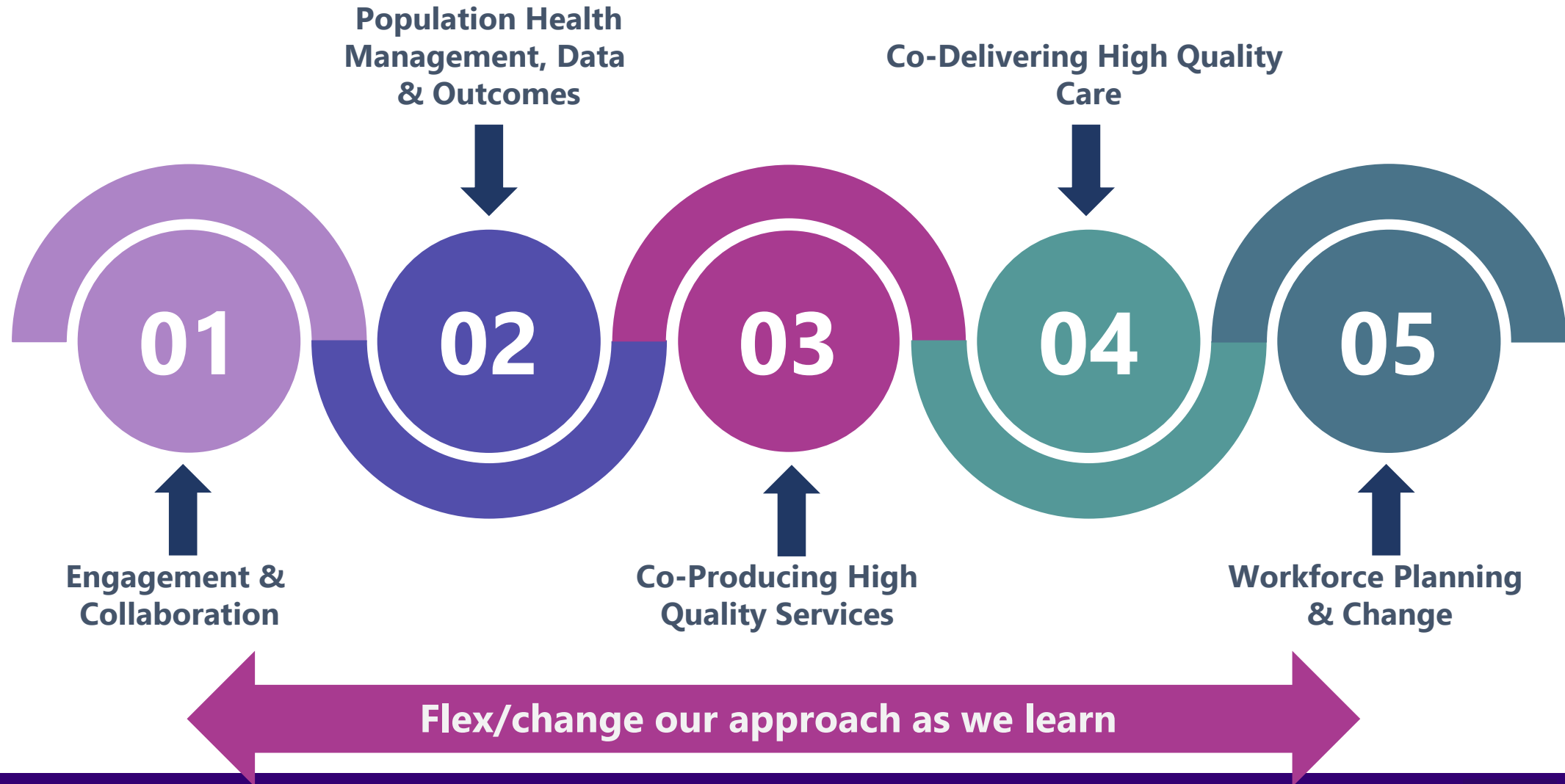
Page 20



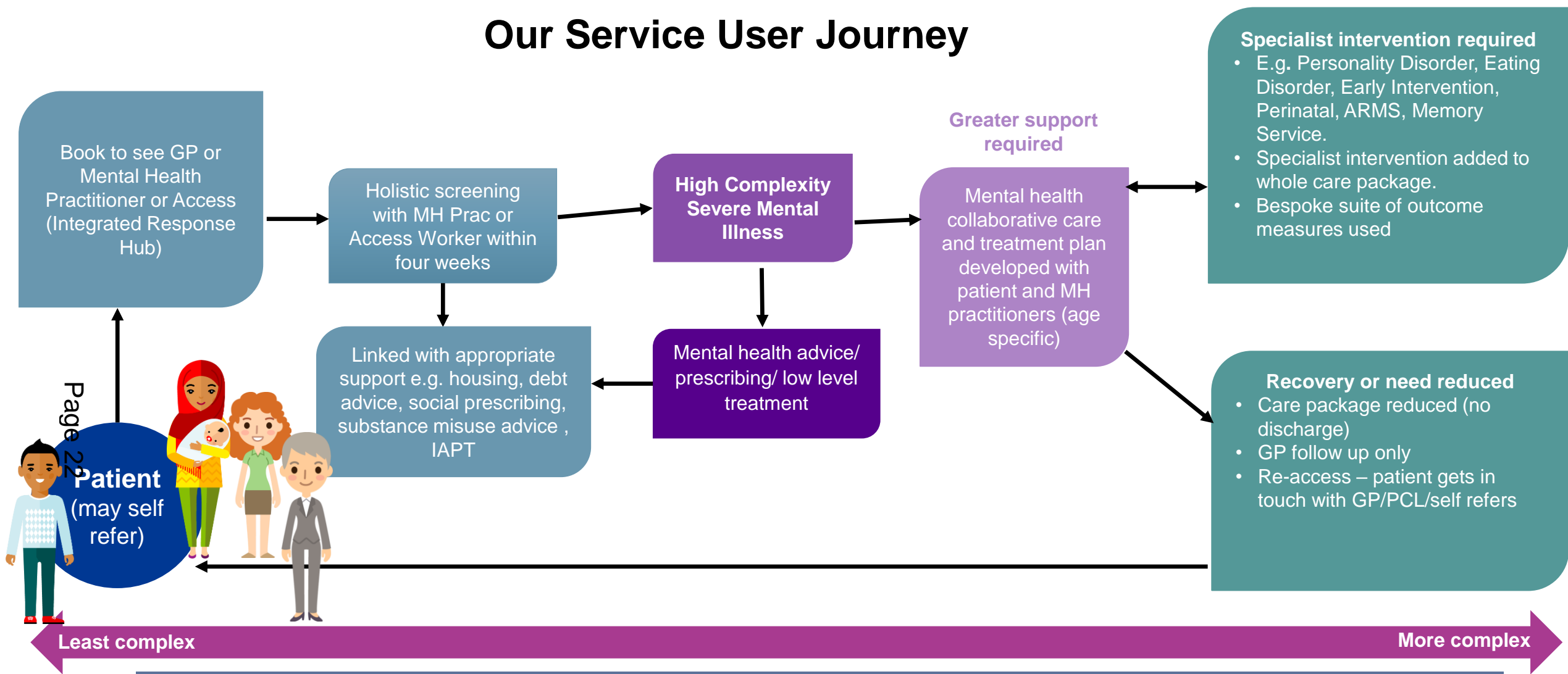
- Local and asset based – building on what we have and addressing gaps
- Integrated and mutually supportive services – focussed on the person
- As well as peer support and therapeutic services – integrated with primary and community care alternatives
- An broad rehabilitation and recovery pathway
- Plus pathway specific opportunities for community rehab, eating disorders and personality disorders

# Overview of CMHF Strategy

Page 21



# Our Service User Journey



Throughout the patient journey:

<b>Meeting physical health needs</b>	Annual health checks and follow up of results. The Mental Health Advanced Clinical Practitioner will support practice nurses etc with assertive outreach and follow up for SMI patients.
<b>Supporting social needs</b>	Links to community assets and social prescribing as required to address social determinants of mental ill-health
<b>Holistic Needs</b>	Used collaboratively to identify needs, plan and measure clinical outcomes
<b>24/7 support</b>	Access to the 24/7 mental health helpline when needed (commissioned separately)

# Community Mental Health Framework

CMHF Transformation Board

## Build and maintain strong relationships

Resilient partnership working can withstand challenging situations, inspire shared learning and act as a model for colleagues to follow



## Tackle problems together

When joint working is organic, motivation to overcome issues is greater, leading to more effective outcomes



## Reinforce the shared vision

Communicate in a clear and consistent way to address challenges/concerns, share opportunities and encourage involvement (e.g. staff champions)



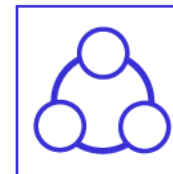
## Talk first

Involve the service user early and often to agree the best way to address their individual needs



## Using population health to influence our decision making

Investment and pathway design informed by population health in order to improve physical and mental health outcomes, promote wellbeing and reduce health inequalities across the system



## Work collaboratively

Commitment to joint decision making and equity of voice

**SOUTH STAFFORDSHIRE WIDE SERVICES**

**Access & Crisis**

**Early Intervention & At Risk Mental Status**

**Memory Service, Dementia & Older Adults**

**PD Pathway (including ILS)**

**Rehab/Recovery Pathway**

**IAPT**

**SOUTH WEST**

**South West Band 8a  
Area Manager**

**Neighbourhood Lead  
Band 7  
(Cannock Rugeley &  
Great Haywood)**

**Neighbourhood Lead  
Band 7  
(Stafford & Seisdon)**

**SOUTH EAST**

**South East Band 8a  
Area Manager**

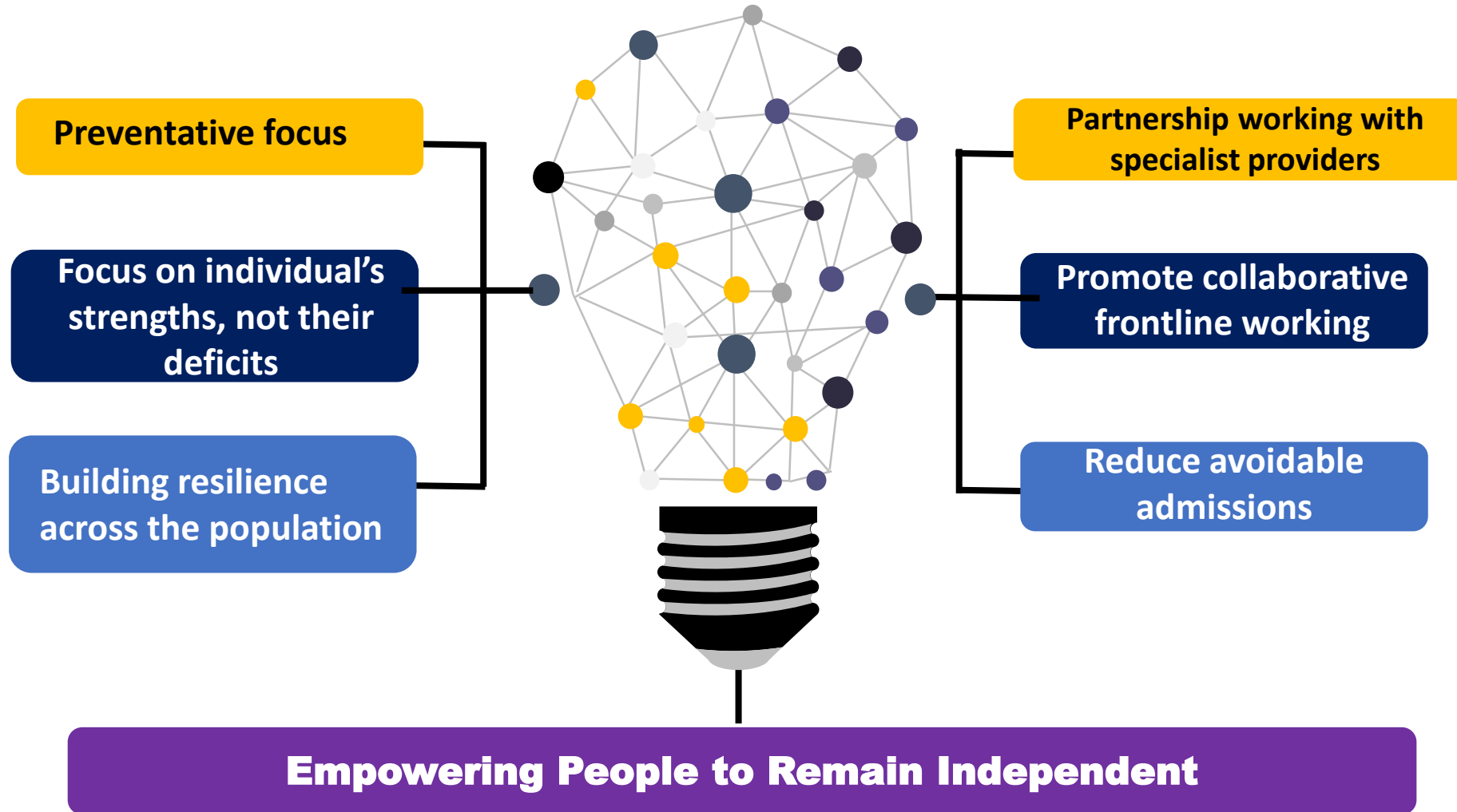
**Neighbourhood Lead  
Band 7  
(East Staffs)**

**Neighbourhood Lead  
Band 7  
(Burntwood, Lichfield &  
Tamworth)**





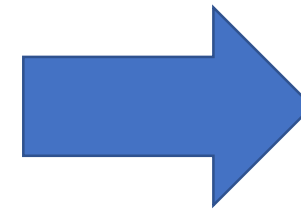
# Crisis Alternatives (Autism)



# Core 24

# Core 24

Page 28

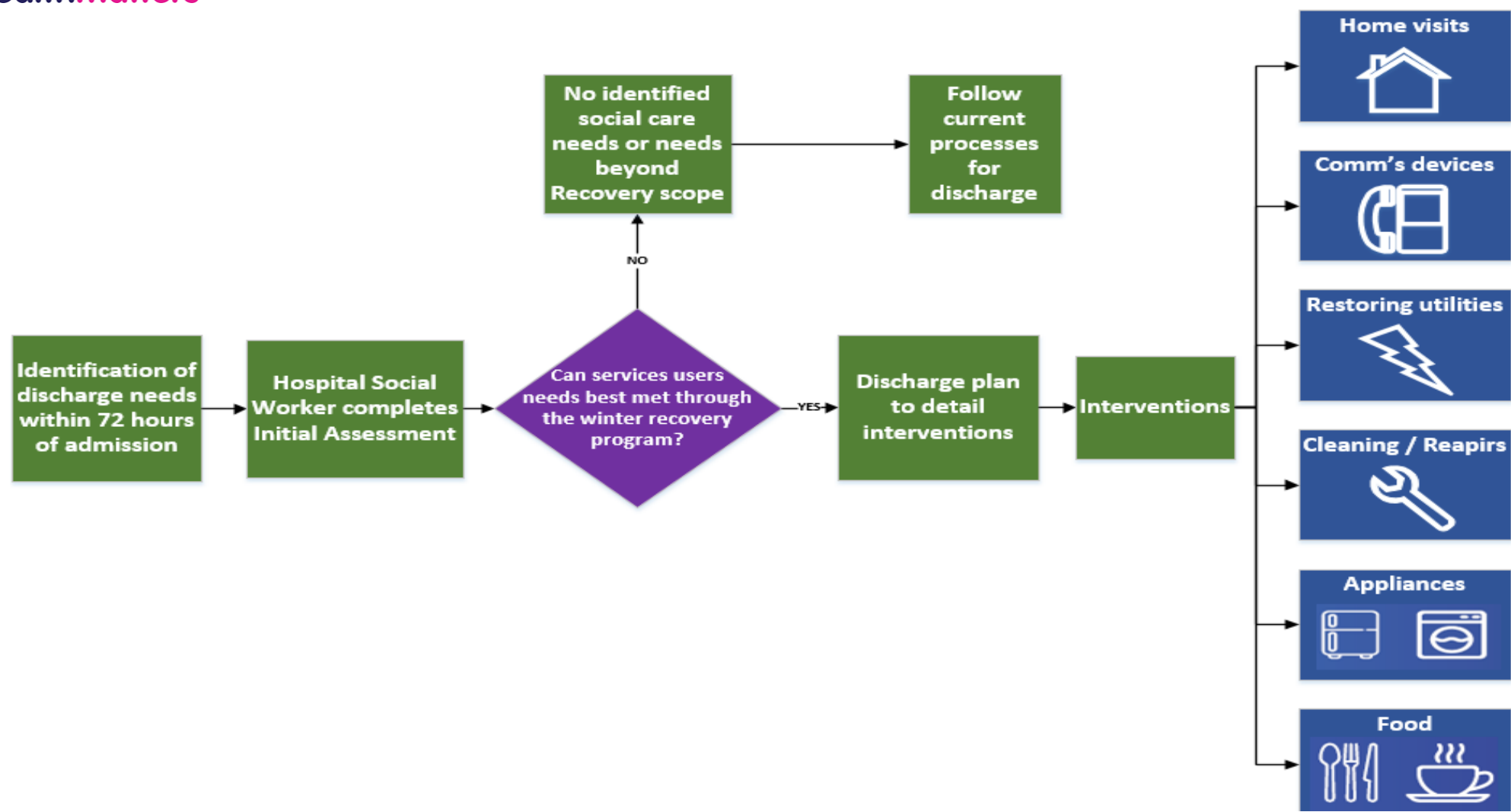


**Mental health teams in all A&Es by 2021 with Core 24 standard teams in 50% of acute hospitals by 2021**

# Winter Discharge & Hospital Avoidance

# Winter Discharge Pathway

Page 30



# Winter Discharge Pathway





## Case Study 1 - Gentleman with significant physical & mental health needs

### Outcome and Support Provided:

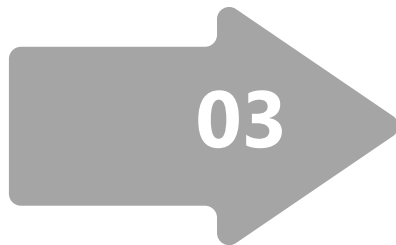
- Joint visit with physical health social worker
- Food parcels
- Utility top-up
- Removal of surplus furniture blocking walkways

Page 32



## Case Study 2 - Gentleman with multiple admissions, social stressors – debt, self neglect

- Food and utility top-up provided
- Removal of broken appliances & installation of new white goods
- Recovery Workers enabling supporting with complex stressors
- Support with move to smaller property and immediate repairs to property to enable this move
- KOMP provided to increase social interaction throughout the day



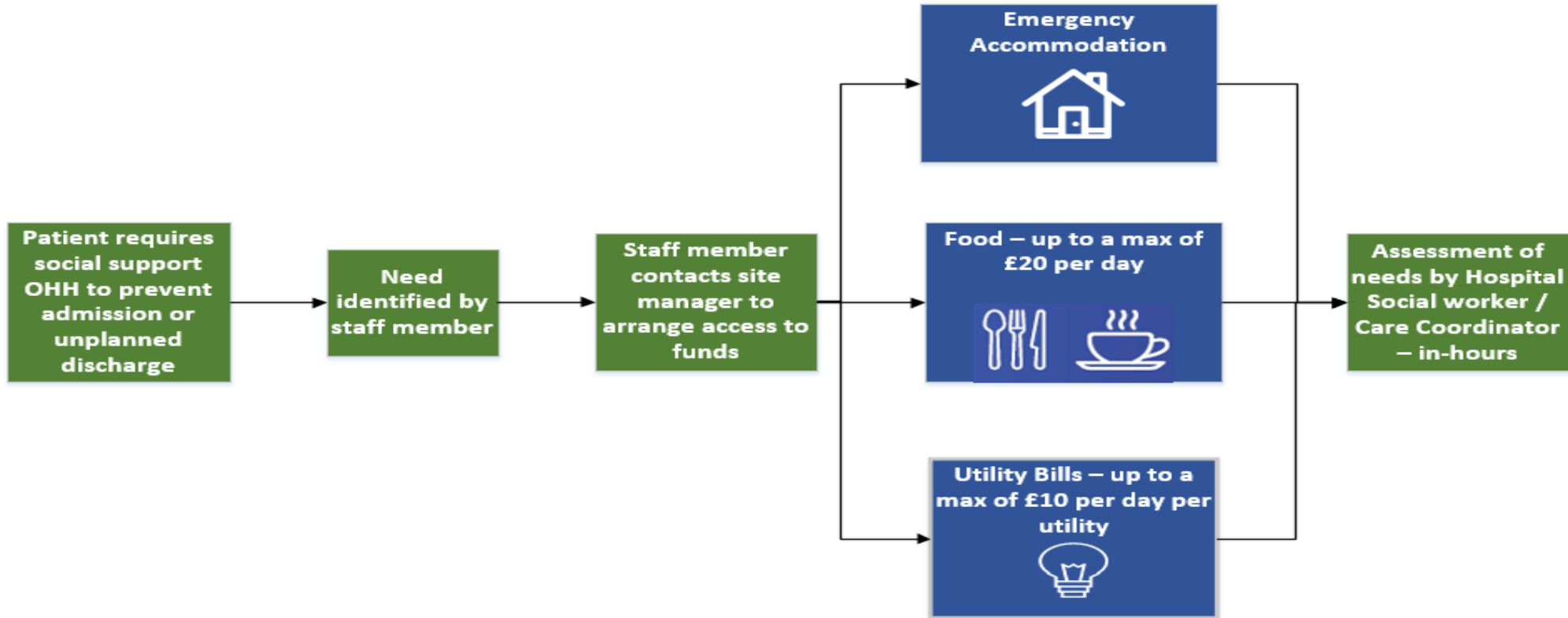
## Case Study 3 - Lady with significant history of admissions, long stay patient

- Change of locks and replacement alarm fob
- Property condition checked and utilities restored and initial clean-up of out of date food
- Support planned to attend bank to restore access to accounts
- Support planned with getting belongings from previous accommodation
- Support planned to cover writing on walls together with her



# Hospital Avoidance / Unplanned Discharge Pathway

Page 33



# IAPT



# Staffordshire and Stoke-on-Trent Wellbeing Service (IAPT)

*Your choice of safe, convenient therapy – On-line, by phone or face-to-face*



**Midlands Partnership**  
 NHS Foundation Trust  
 A Keele University Teaching Trust



**North Staffordshire  
 Combined Healthcare**  
 NHS Trust



**Midlands Partnership**  
 NHS Foundation Trust  
 A Keele University Teaching Trust

# The Staffordshire & Stoke-on-Trent Wellbeing Service



## Integrating Healthcare Provision for Staffordshire



# Improving Access to Psychological Therapies (IAPT)

- National model for psychological therapies for anxiety and depression - based on NICE guidance and the IAPT Best Practice Manual
- <https://www.england.nhs.uk/publication/the-improving-access-to-psychological-therapies-manual/>
- Contact us on **0300 303 0923** – dedicated self referral line for IAPT in Staffordshire and Stoke on Trent (prefer patients to self refer)
- [srpeast@mpft.nhs.uk](mailto:srpeast@mpft.nhs.uk) for email referrals – patients will receive three calls from us in 7 days with a message left asking them to contact us



**Health and Care Overview and Scrutiny Committee – Monday 26 July 2021  
District/Borough Digest**

Under the Health Scrutiny Code of Joint Working with District and Borough Councils, Authorities have undertaken to keep relevant Partners informed of their consideration of health matters having regard to the general working principle of co-operation and the need to ensure a co-ordinated Staffordshire approach. Therefore, the following is a summary of the business transacted at the meeting of the Health and Care Overview and Scrutiny Committee held on Monday 26 July 2021 - link to Agenda and reports pack:-

<http://modern.gov.staffordshire.gov.uk/ieListDocuments.aspx?CId=871&MId=13719>

The webcast of the meeting can also be viewed following the above link to mod.gov.

Agenda Item	District(s)/Borough(s)
<p><b>Walley’s Quarry – Health Implications</b></p> <p>This special meeting of the Committee was held at Castle House, Newcastle under Lyme (NuLBC) with Borough Councillors from the Health, Wellbeing and Partnerships Committee in attendance. The Committee considered the impacts of odour emissions from Walley’s Quarry Landfill Site on resident’s physical health and mental wellbeing.</p> <p>Key partners from Staffordshire County Council (SCC), Public Health England (PHE), Environment Agency (EA) and Newcastle under Lyme Borough Council (NuLBC) were in attendance to provide clarification to the reports and to respond to members questions.</p> <p>There were 7 key themes considered to develop a clearer understanding of the evidence and the issues:</p> <ul style="list-style-type: none"> <li>• The actual physical health impacts from Walley’s Quarry on individuals</li> <li>• The site and monitoring requirements</li> <li>• Employees health and HSE</li> <li>• Impacts on mental health of residents</li> <li>• Wider symptoms being seen by residents</li> <li>• What can residents expect going forward</li> </ul> <p>Following in depth scrutiny of the matter and a healthy debate the Committee was able to draw its conclusions and made several recommendations. The priority recommendation was to write to Government to highlight the length of</p>	<p>All Districts and Boroughs</p>

time odour emissions from Walley's Quarry Landfill site have had, and continue to have, adverse impact on the health and wellbeing of residents in Staffordshire and to request intervention in this matter.	
--	--

The full debate (3 hours) can be viewed [here](#)

Their next meeting will be held on Monday 9 August 2021 at 10.00 am, County Buildings, Stafford.





temporarily closed.

Engagement activity had previously taken place to inform the clinical model of care that was included in the options appraisal process. The option appraisal process took place from November 2019 through to February 2020, the process was paused due to the pandemic. The Committee considered the service changes presented, current and previous involvement work to assess the impact of the proposed model of care, and the ongoing short survey of service users and maternity workforce. The Committee asked for further data about the trends for home births to be circulated.

The next stage was for the trusts to provide revised business cases on how to reinstate the birthing services to the Staffordshire and Stoke-on-Trent Maternity and Neonatal Programme Board in Autumn 2021. The final proposals would be considered by the Committee at a future meeting

### **Covid-19 Update**

The Committee considered an update on the current position relating to Covid-19, with focus on case rates, hospitalisations, death rate, infection rates and vaccine roll out for under 18 year olds.

It was noted that informal guidance for roll out of vaccines for under 18 age group was not yet available, there was an increase in demands across NHS services, and that recent legislation required health and care workers to be fully vaccinated by 11 November 2021 to continue to work in the care sector, therefore they must start vaccinations by 18 September. There would be further updates to the next meeting on Phase 3 Flu and Covid vaccinations.

All Districts and  
Boroughs

Their next meeting will be held on Monday 20 September 2021 at 10.00 am, County Buildings, Stafford.

## Health & Wellbeing Scrutiny Work Plan

Work Plan 2021 – 2022		
Work Area Themes for the Year		
<b>1. Mental Wellbeing</b>		
Topics	Target Meeting	Additional information
Community mental health services transformation – pathways to care in Tamworth	23 <sup>rd</sup> September 2021	Invitation extended to Assistant Director Partnership & representative of Midland Partnership Foundation Trust
Leisure Services	date to be confirmed	
Substance abuse / addition		
Young people’s experiences in Tamworth		To capture the working groups learnings
Loneliness / isolation		
<b>2. Homelessness</b>		
Topics	Target Meeting	Additional information
Overview of services available to rough sleepers / homeless people in Tamworth		Suggested invitation to representatives of Heart of Tamworth and/ or other relevant voluntary organisations
Housing Allocations Policy – post implementation review		Suggested invitation to Assistant Director, Neighbourhoods
Homelessness Winter Relief Update	19 <sup>th</sup> October 2021	Invitation to Assistant Director, Neighbourhoods

**Other suggested topics for Committee consideration**

Green and open spaces		
Attainment and Skills in Tamworth		
Safeguarding updates (2 per year)	19 <sup>th</sup> October 2021 & 29 <sup>th</sup> March 2022	Invitation to Portfolio Holder and Officers

**Specific topics to feed in to Staffordshire County Council (separate from main Themes)**

<b>Topic</b>	<b>Date of planned Staffs consideration</b>	<b>Additional information</b>
Wider determinants of health in Tamworth, including diet / food vulnerability / healthy eating / social prescribing		Extend an invitation to voluntary sector to understand current initiatives eg Community Together CIC
Strategic Transformation Programme (STP)		To tie in with County consideration when dates for County consideration known

**Possible Working Group topics**

Armed Forces Covenant		Understand the current Staffordshire wide and Tamworth position

**Upcoming Health & Wellbeing Scrutiny Committee Meetings**

23<sup>rd</sup> September 2021  
19<sup>th</sup> October 2021

20<sup>th</sup> November 2021

25<sup>th</sup> January 2022

29<sup>th</sup> March 2022

**Upcoming Relevant County Council Meetings**

**Health and Care Overview and Scrutiny Committee – Staffordshire  
County Council**

- 20 September 2021 (amended date)
- 25 October 2021
- 29 November 2021
- 31 January 2022
- 15 March 2022
- 19 April 2022

This page is intentionally left blank